

INTERIOR DETAILS

Floors: Wooden plank, patterned broadloom carpet

Walls: Plain plaster or chair rail

Windows: Sash or French doors

Doors: Paneled, heavy molding; wooden transom with cornice

Chimneypiece: Projecting, classical, black marble, or faux painted

Ceiling: Plain with crown or cornice molding, anaglypta

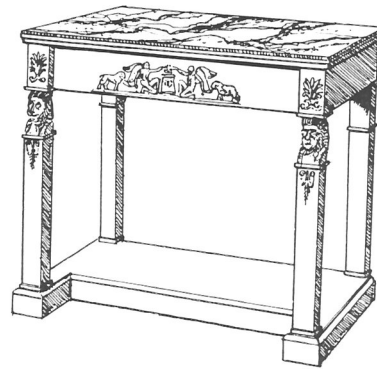
Stairs: Several configurations; curved was popular; wooden with turned balusters

TEXTILE DESCRIPTION

Colors: French-inspired color schemes included rich vivid red, gold, deep green, brown, and royal purple; these were also used in America and were sometimes softened to pale mauve, spun honey, dull greens and browns, and dull gray-violet

Patterns: Plain satin background with isolated small motifs such as the laurel wreath, the star or snowflake, honeybee, or classical urns; also the griffin, festooning, both broad and blended satin stripes

Textures: Plain satin, antique taffeta and silk textures, various sheer and semisheer fabrics

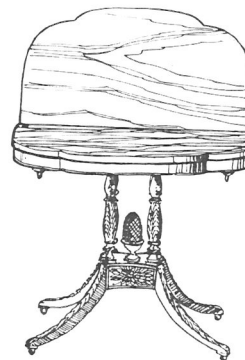
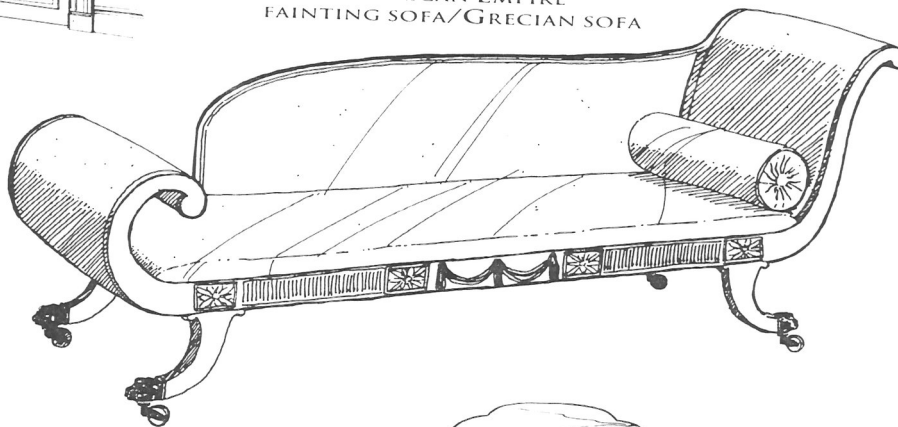


AMERICAN EMPIRE
CONSOLE TABLE



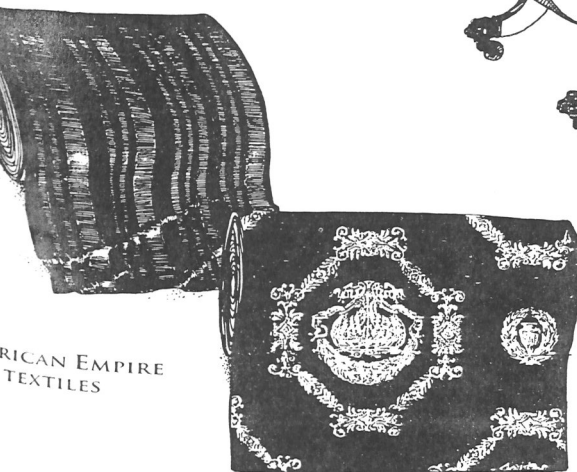
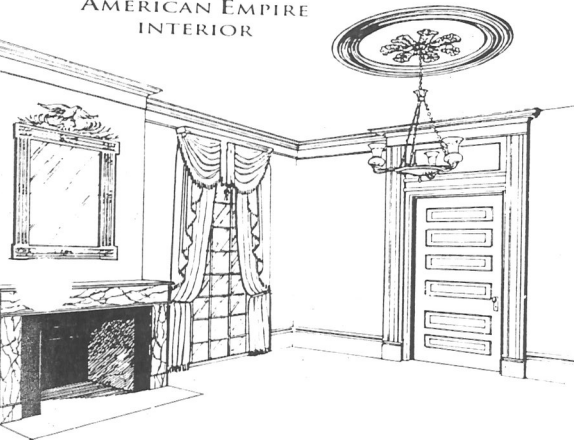
DUNCAN PHYFE CHAIR

AMERICAN EMPIRE
FAINTING SOFA/GRECIAN SOFA



DUNCAN PHYFE
FLAP-TOP TABLE

AMERICAN EMPIRE
INTERIOR



AMERICAN EMPIRE
TEXTILES